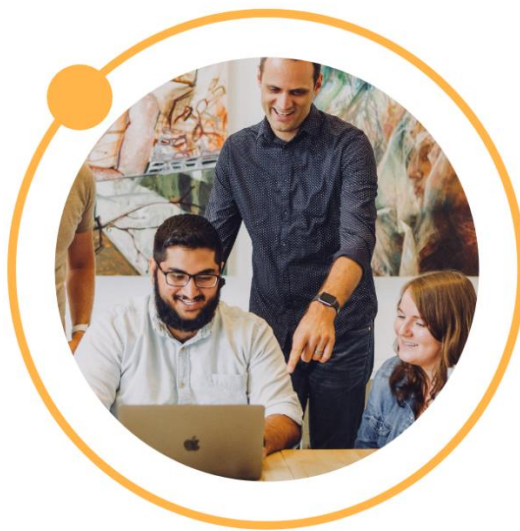


Access the ACSO Community Care Portal for the first time.

1. Open the Portal via ACSO Community Care Webpage or via the URL:
<https://acso.powerappsportals.com/>



Accessing the Portal

The Portal is a web-based application, you can access from your browser.

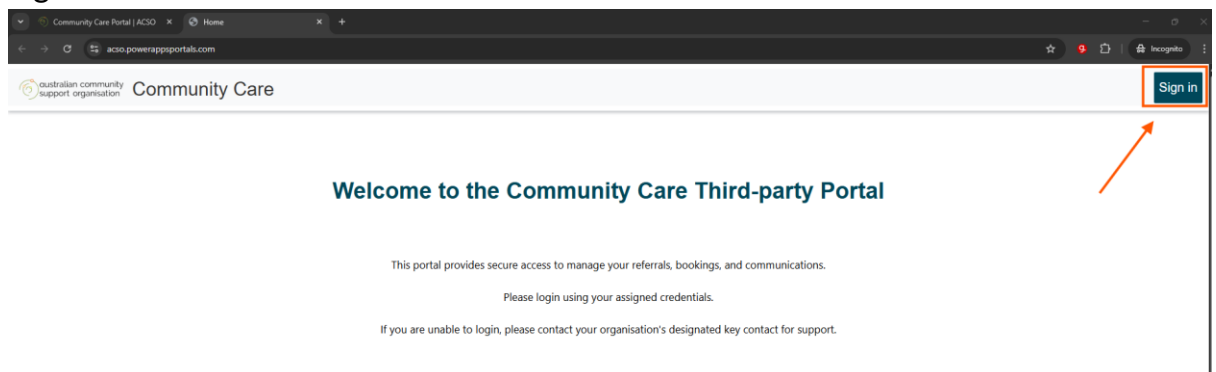
Before logging into the Portal for the first time, you will need to register for access. This one-time registration ensures that your account is securely linked to your organisation and permissions are correctly set.

Simply click the **Register** button below to start the process.

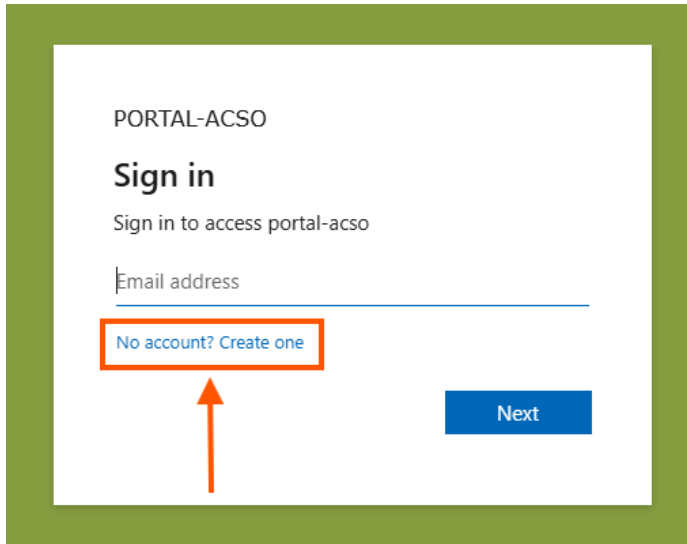
From 24 November, after your registration request has been completed by ACSO, you will have access to the Portal by clicking the Portal button below. Have questions? Scroll down to find out how you can reach out to us.



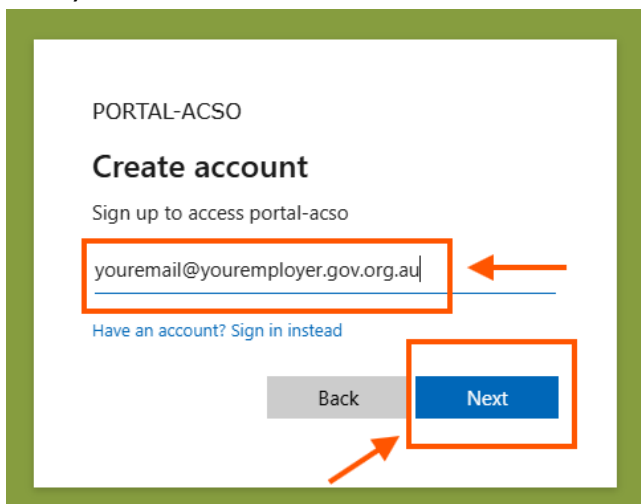
2. Sign In



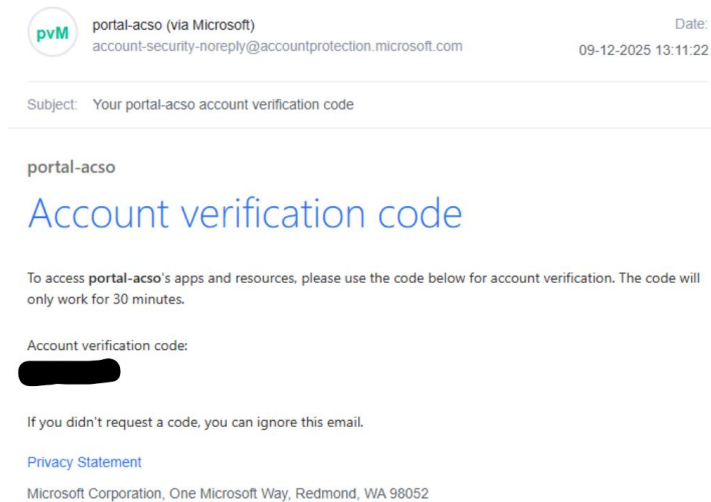
3. Create an Account



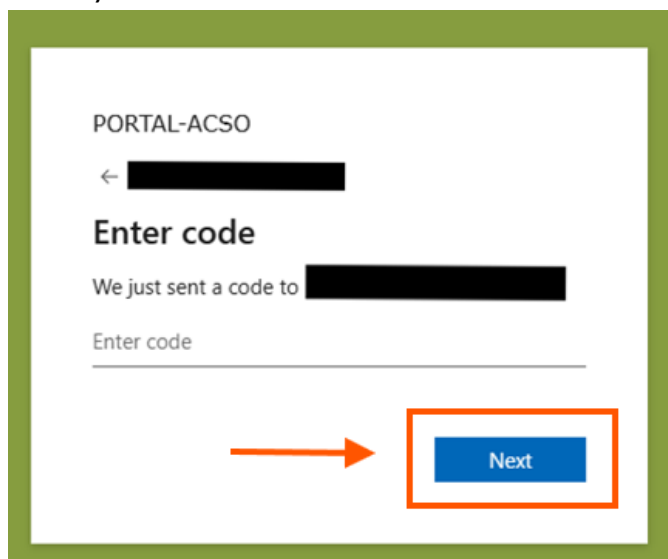
4. Add your email & click 'Next'



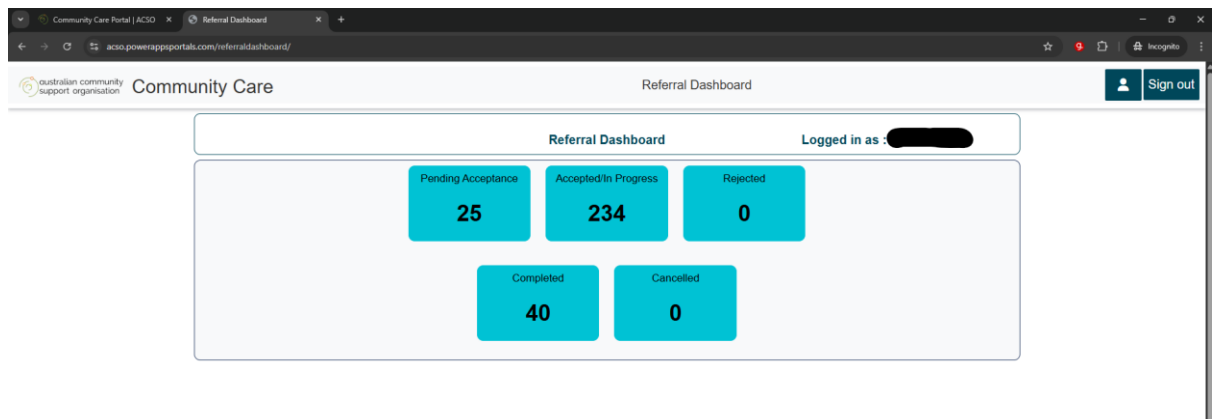
5. Check your email for a Verification Code



6. Enter your Verification Code & Click 'Next'



7. You are in the Portal



NOTE: You only need to complete the **Account Creation** process once.

For all future visits:

1. Open the Portal webpage.
2. Click **Sign In**.
3. Enter your email address.
4. A verification code will be emailed to you.
5. Enter the code, and you'll be signed in!