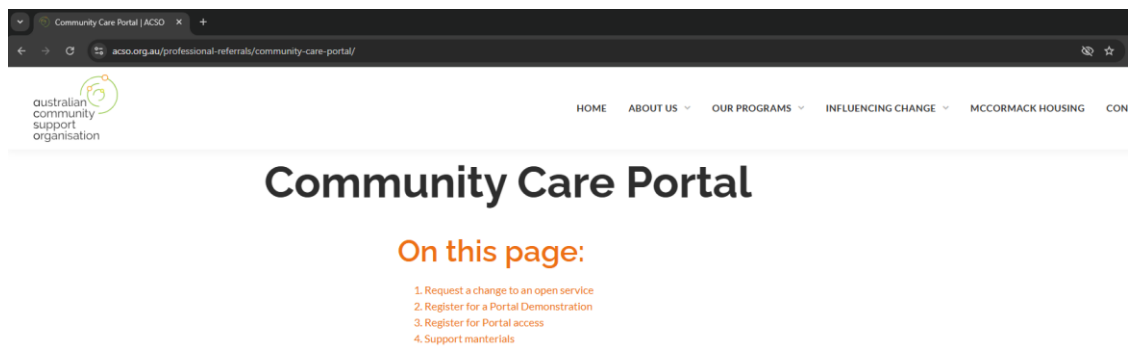
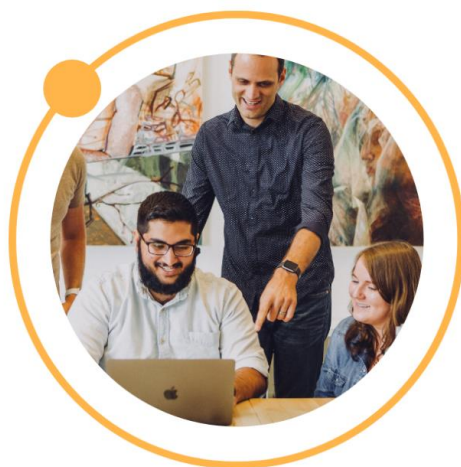


Register for and access the ACSO Community Care Portal for the first time.

1. Go to ACSO Community Care Portal webpage:
<https://www.acso.org.au/professional-referrals/community-care-portal/>



2. Register for the Portal



Accessing the Portal

The Portal is a web-based application, you can access from your browser.

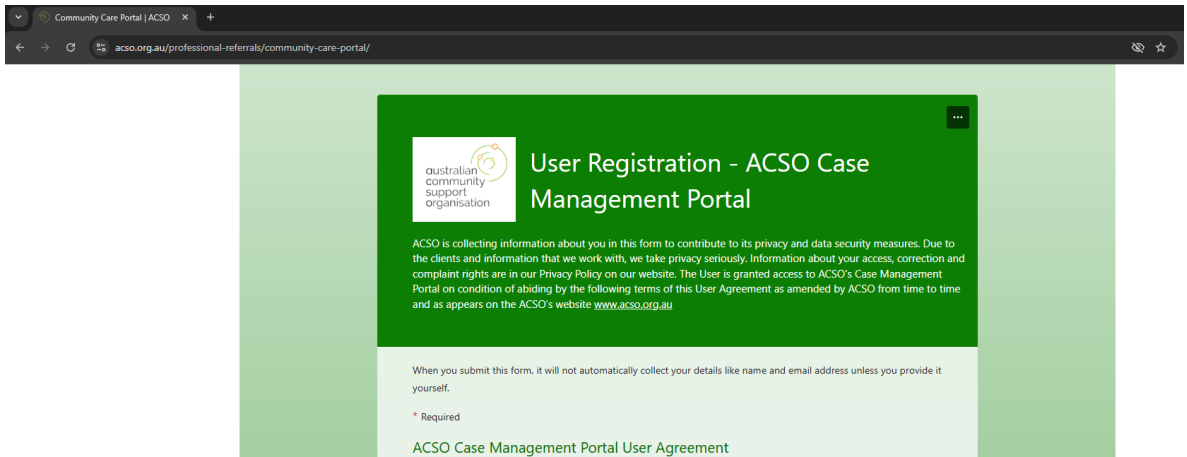
Before logging into the Portal for the first time, you will need to register for access. This one-time registration ensures that your account is securely linked to your organisation and permissions are correctly set.

Simply click the **Register** button below to start the process.

From 24 November, after your registration request has been completed by ACSO, you will have access to the Portal by clicking the Portal button below. Have questions? Scroll down to find out how you can reach out to us.



3. Complete the User Registration Form & Submit



Community Care Portal | ACSO x +

aco.org.au/professional-referrals/community-care-portal/

australian community support organisation

User Registration - ACSO Case Management Portal

ACSO is collecting information about you in this form to contribute to its privacy and data security measures. Due to the clients and information that we work with, we take privacy seriously. Information about your access, correction and complaint rights are in our Privacy Policy on our website. The User is granted access to ACSO's Case Management Portal on condition of abiding by the following terms of this User Agreement as amended by ACSO from time to time and as appears on the ACSO's website www.acso.org.au

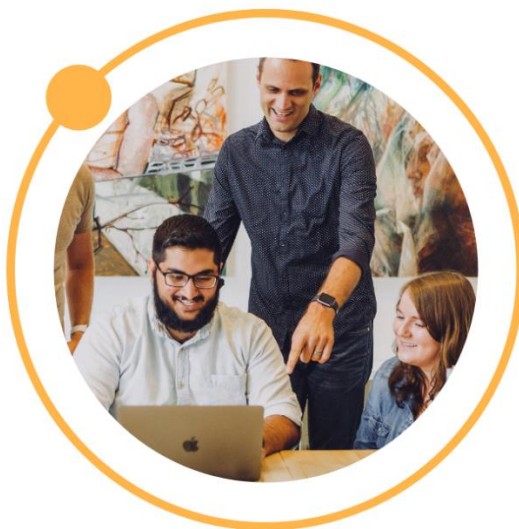
When you submit this form, it will not automatically collect your details like name and email address unless you provide it yourself.

* Required

ACSO Case Management Portal User Agreement

NOTE: Await confirmation of your registration, before proceeding to the next step.

4. Open the Portal via ACSO Community Care Webpage or via the URL: <https://acso.powerappsportals.com/>



Accessing the Portal

The Portal is a web-based application, you can access from your browser.

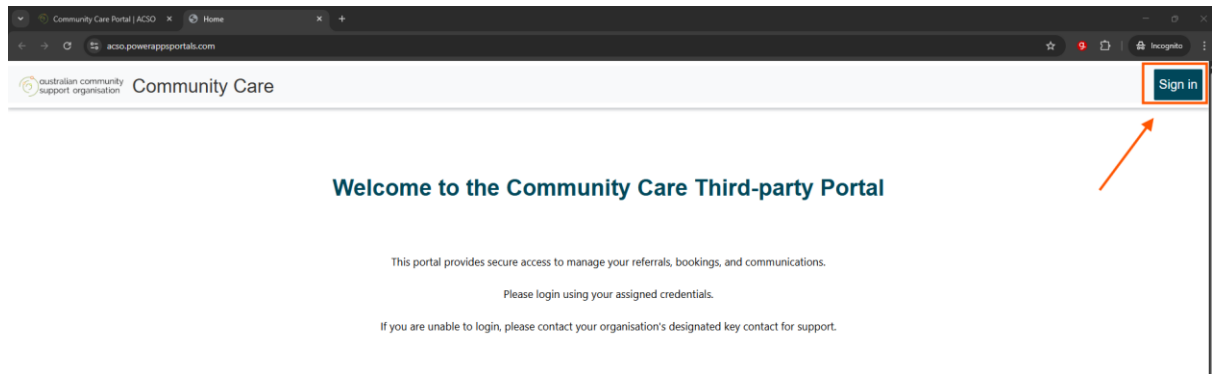
Before logging into the Portal for the first time, you will need to register for access. This one-time registration ensures that your account is securely linked to your organisation and permissions are correctly set.

Simply click the **Register** button below to start the process.

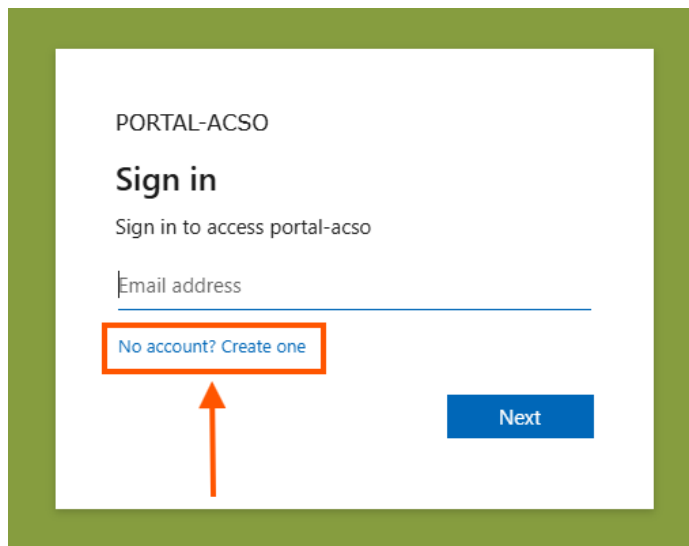
From 24 November, after your registration request has been completed by ACSO, you will have access to the Portal by clicking the Portal button below. Have questions? Scroll down to find out how you can reach out to us.



5. Sign In



6. Create an Account



7. Add your email & click 'Next'

PORTAL-ACSO

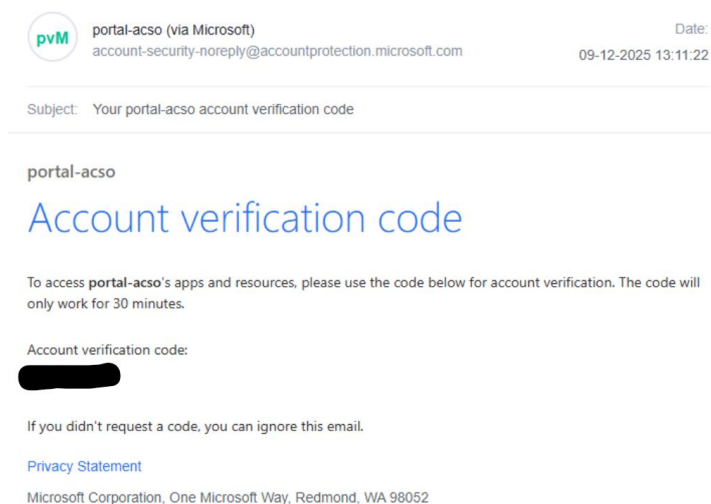
Create account

Sign up to access portal-acso

[Have an account? Sign in instead](#)

[Back](#) [Next](#)

8. Check your email for a Verification Code



9. Enter your Verification Code & Click 'Next'

PORTAL-ACSO

← [Redacted]

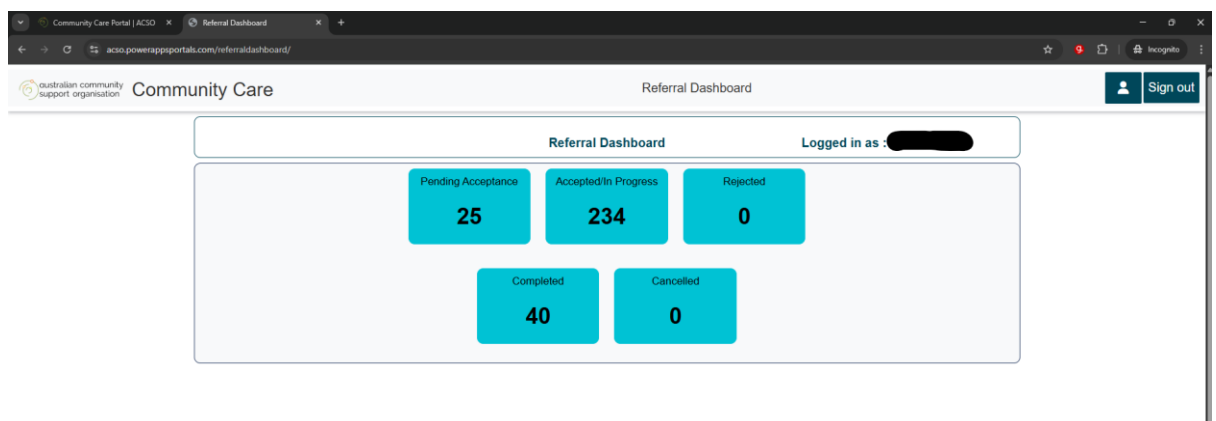
Enter code

We just sent a code to [Redacted]

Enter code

Next

10. You are in the Portal



NOTE: You only need to complete the **Account Creation** process once.

For all future visits:

1. Open the Portal webpage.
2. Click **Sign In**.
3. Enter your email address.
4. A verification code will be emailed to you.
5. Enter the code, and you'll be signed in!